

Original
aus dem BMW
Archiv

Original
aus dem BMW
Archiv

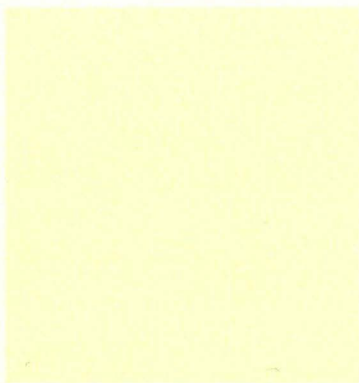


BMW — Freude am Fahren

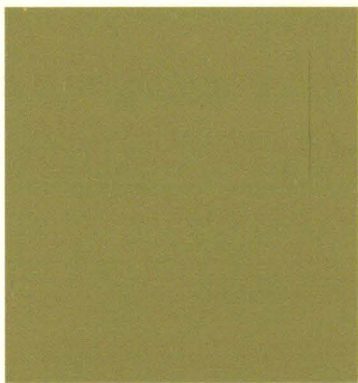


Farben und Polster

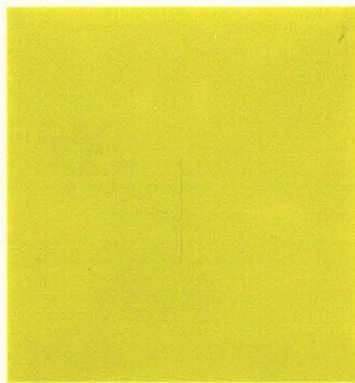
colour and upholstery, laques et
garnitures, colori e interni, kleur en
bekleding, färgprover och klädsel



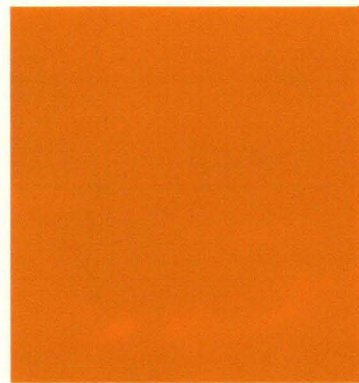
85 Chamonix



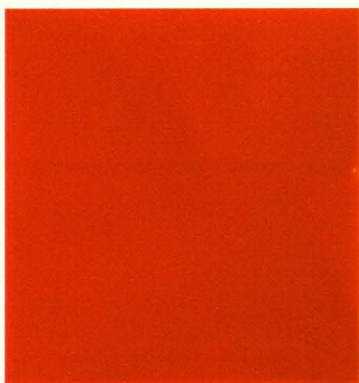
06 Sahara



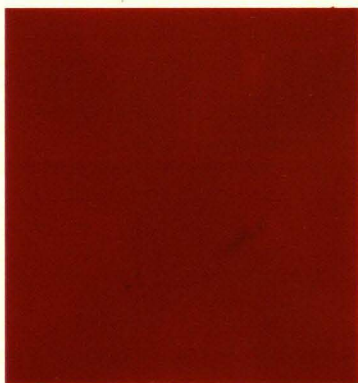
70 Golf



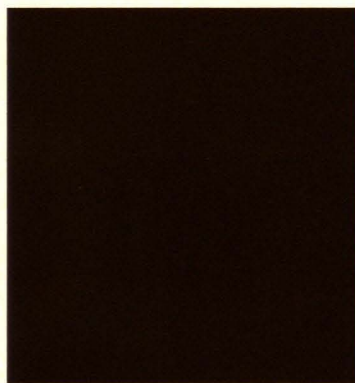
02 Colorado



22 Inka



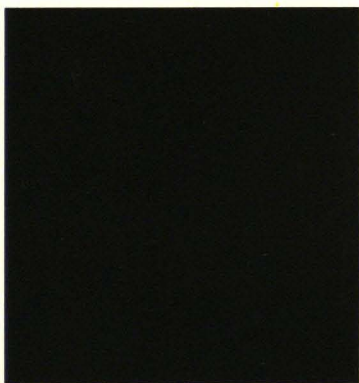
24 Verona



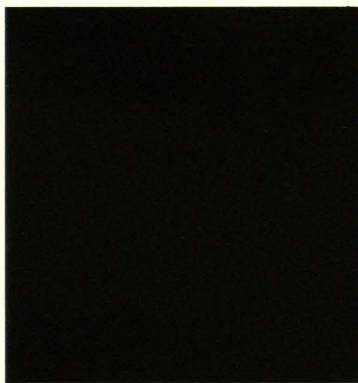
21 Malaga



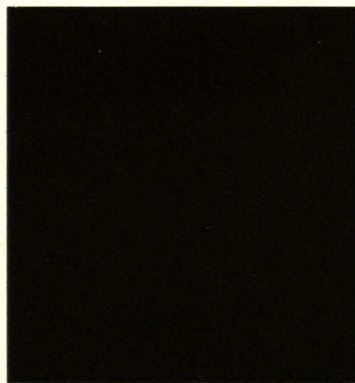
71 Agave



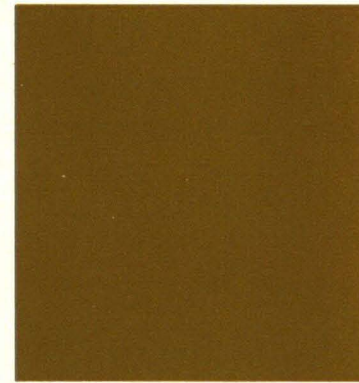
36 Riviera



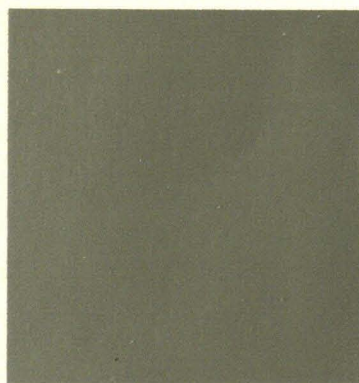
41 Atlantik



86 Schwarz



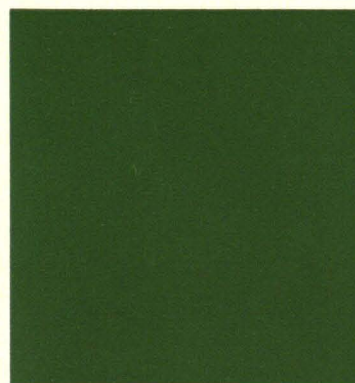
08 Ceylon metallic



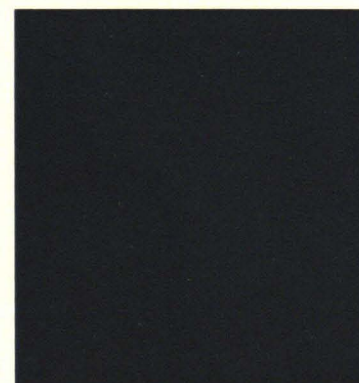
60 Polaris metallic



37 Fjord metallic

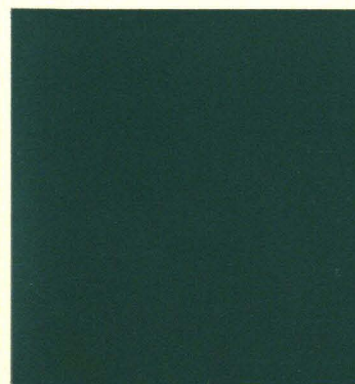


72 Taiga metallic



42 Baikal metallic

Metallic-Farben gegen Aufpreis
 Metallic paintwork at extra charge
 Couleurs métalliques contre majoration de prix
 Tinte metallizzate con sovrapprezzo
 Metallic lakken tegen meerprijs
 Metallic-lackering mot pristillagg



65 Türkis metallic



40 Nachtblau metallic

BMW 1602/1802/2002/2002 tii/touring 1802/2002/2002 tii



S 21/20



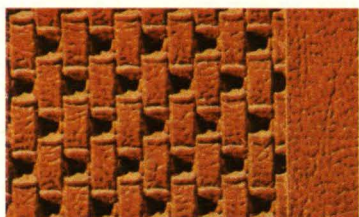
S 50/39



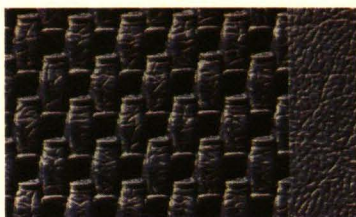
S 70/92



S 98/92



K 14/20



K 43/39

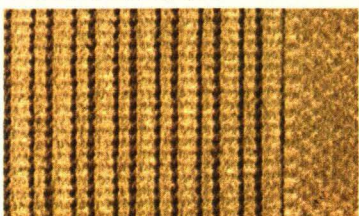


K 68/92



K 88/92

BMW 520/520 i



S 18/31



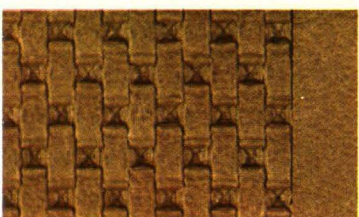
S 37/39



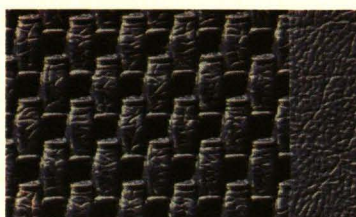
S 53/92



S 99/92



K 33/31

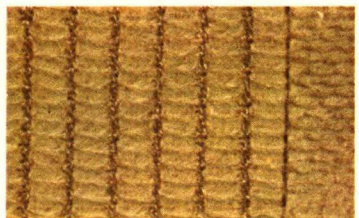


K 43/39



K 88/92

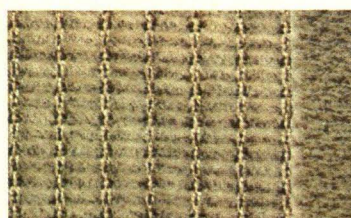
BMW 2500/2800/3.0 S/3.0 Si



S 28/31



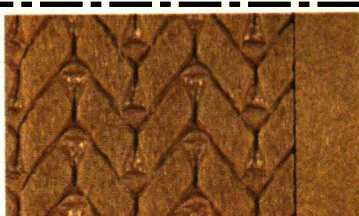
S 42/39



S 55/92



S 91/92



K 32/31

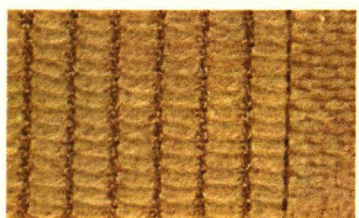


K 49/39



K 94/92

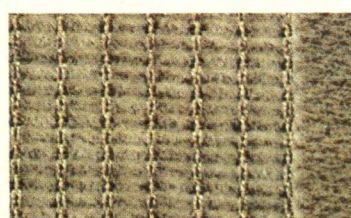
BMW 3.0 CS/3.0 CSi



S 28/31



S 42/39



S 55/92



S 91/92



K 32/31



K 49/39



K 94/92

In der Tabelle finden Sie die serienmäßig lieferbaren Stoff- und Kunstlederkombinationen, den Farben und jeweiligen Modellen zugeordnet. Kunstlederpolsterung bei 4-Zylinder-Modellen gegen Aufpreis – außer bei tii-Modellen und Cabrio.
Bei Sonderwünschen (auch »Echt-Leder«) berät Sie gern Ihr BMW-Händler.

The cloth and leatherette upholstery as standard equipment for our production programme is to be seen in the schedule, corresponding to the different body-colours and BMW models.

Leatherette upholstery for 4-cylinder models at extra charge except tii-models and Cabrio.

Should you have any requirements for a special upholstery (for example genuine leather) please contact your BMW dealer.

Les échantillons de tissu et similicuir des garnitures en série de notre gamme de production se trouvent dans le tableau correspondant aux couleurs et modèles différents.

Intérieurs en skay pour les 4-cylindres modèles contre majoration de prix – sauf les modèles tii et Cabriolets.

Pour toute demande spéciale (par exemple garniture en cuir véritable) l'agent BMW est à votre disposition.

1602/1802/ 2002/2002 tii + touring	520/520 i	2500/2800/ 3.0 S/3.0 Si	3.0 CS 3.0 CSI
S 50/39 K 43/39	S 37/39 K 43/39	S 42/39 K 49/39	S 42/39 K 49/39
S 21/20 K 14/20	S 18/31 K 33/31	S 28/31 K 32/31	S 28/31 K 32/31
S 98/92 K 88/92	S 99/92 K 88/92	S 91/92 K 94/92	S 91/92 K 94/92
S 98/92 K 88/92	S 99/92 K 88/92	S 91/92 K 94/92	S 91/92 K 94/92
S 98/92 K 88/92	S 99/92 K 88/92	S 91/92 K 94/92	S 91/92 K 94/92
S 98/92 K 88/92	S 99/92 K 88/92	S 91/92 K 94/92	S 91/92 K 94/92
S 70/92 K 88/92	S 53/92 K 88/92	S 55/92 K 94/92	S 55/92 K 94/92
S 21/20 K 14/20	S 18/31 K 33/31	S 28/31 K 32/31	S 28/31 K 32/31
S 70/92 K 68/92	S 53/92 K 88/92	S 55/92 K 94/92	S 55/92 K 94/92
S 70/92 K 68/92	S 53/92 K 88/92	S 55/92 K 94/92	S 55/92 K 94/92
S 70/92 K 68/92	S 53/92 K 88/92	S 55/92 K 94/92	S 55/92 K 94/92
S 98/92 K 88/92	S 99/92 K 88/92	S 91/92 K 94/92	S 91/92 K 94/92
S 50/39 K 43/39	S 37/39 K 43/39	S 42/39 K 49/39	S 42/39 K 49/39
S 50/39 K 43/39	S 37/39 K 43/39	S 42/39 K 49/39	S 42/39 K 49/39
S 98/92 K 88/92	S 99/92 K 88/92	S 91/92 K 94/92	S 91/92 K 94/92
S 70/92 K 68/92	S 53/92 K 88/92	S 55/92 K 94/92	S 55/92 K 94/92
S 70/92 K 88/92	S 53/92 K 88/92	S 55/92 K 94/92	S 55/92 K 94/92
–	–	–	S 55/92
–	–	–	K 94/92

S – Stoff cloth tissu stoffa stof tygklädsel
K – Kunstleder leatherette similicuir finta pelle kunstleder konstläder

Änderungen vorbehalten
Oktober 1972

Alterations reserved
October 1972

Sous toute réserve
de modifications
Octobre 1972

Nella tabella sono indicate le combinazioni degli interni in stoffa e in finta pelle disponibili, accostate ai colori e ai diversi modelli. Interno in finta pelle con sovrapprezzo per i modelli 4 cilindri – eccettuati i modelli tii e Cabrio.

In caso di richieste speciali (anche "vera pelle"), il Vostro Concessionario BMW è a Vostra disposizione per informazioni e consigli.

De tabel geeft U een overzicht van de kleuren met de daarbij behorende stof- en kunstledercombinaties in de verschillende modellen.

Kunstlederbekleding bij alle modellen tegen meerprijs.

Bij speciale wensen (b.v. echt leder) verstrekt U Uw BMW-dealer gaarne alle informatie.

Nedanstående tabell visar vilka kombinationer av lack och klädsel som kan erhållas i seriemässigt utförande. Konstläderklädsel till 4-cylindermotornerna mot pristillägg (Undantag: tii- och kabriolet-modellerna).

Beträffande speciella önskemål, t. ex. klädsel i äkta läder, v.g. kontakta Er BMW-återförsäljare.

Lackierungen/colours couleurs/colori kleur/lackering	
Chamonix	85
Sahara	06
Golf	70
Colorado	02
Inka	22
Verona	24
Malaga	21
Agave	71
Riviera	36
Atlantic	41
Schwarz	86
Ceylon	08
Polaris	60
Fjord	37
Taiga	72
Baikal	42
Türkis	65
Nachtblau	40

Metallic-Farben gegen Aufpreis/Metallic paintwork at extra charge/Couleurs métallique contre majoration de prix/Tinte metallizzate con sovrapprezzo/Metallic lakken tegen meerprijs/ Metallic-lackering mot pristillägg.

La casa si riserva
modifiche
Ottobre 1972

Wijzigingen
voorbhouden
Oktober 1972

Rätt till ändringar
förbehålles
Oktober 1972