

Explanation of Wiring Diagram

I = Cross Section Size mm²

II = Basic Colour

III = Code Spiral

IV = Wire No.

V = Terminal Des.

VI = Terminal Connection
(wire ends galvanized)

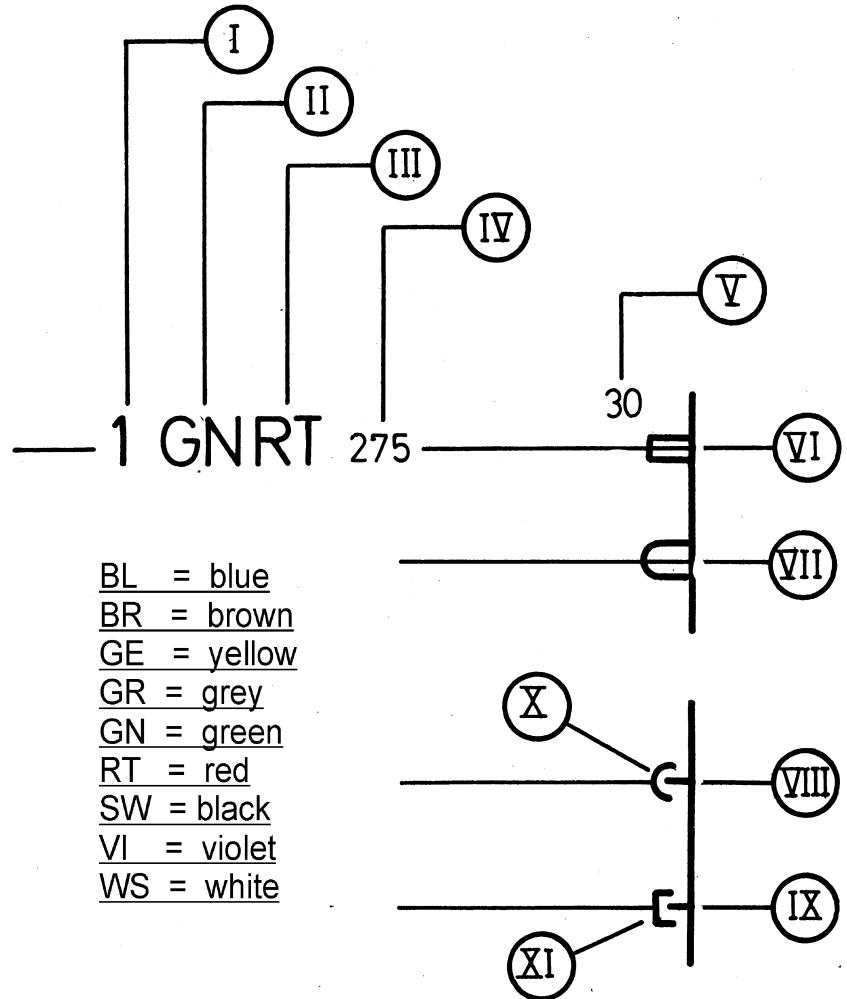
VII = Threaded Connection
(cable shoe)

VIII = Round Male Plug

IX = Flat Male Plug

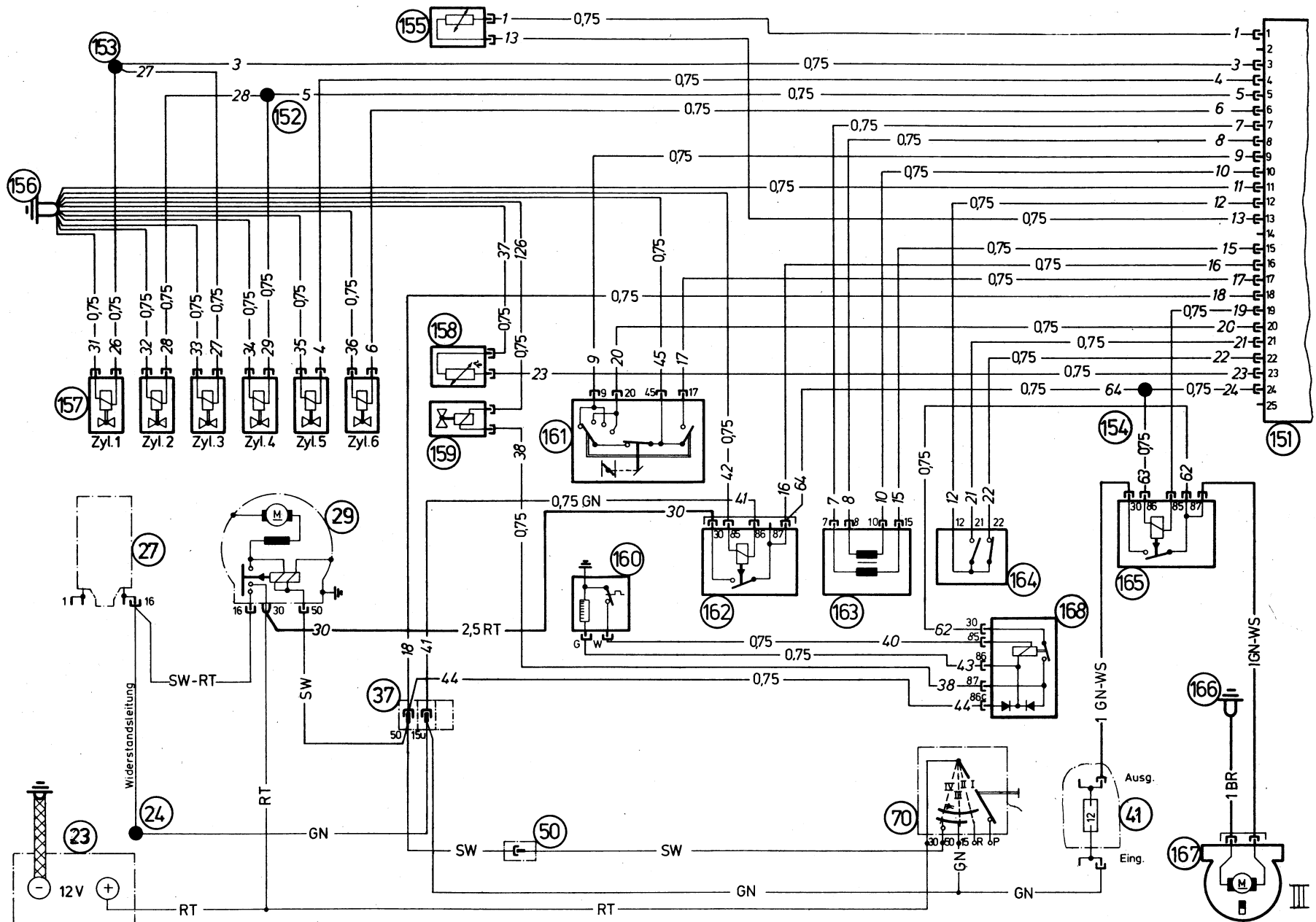
X = Round Female Plug

XI = Flat Female Plug

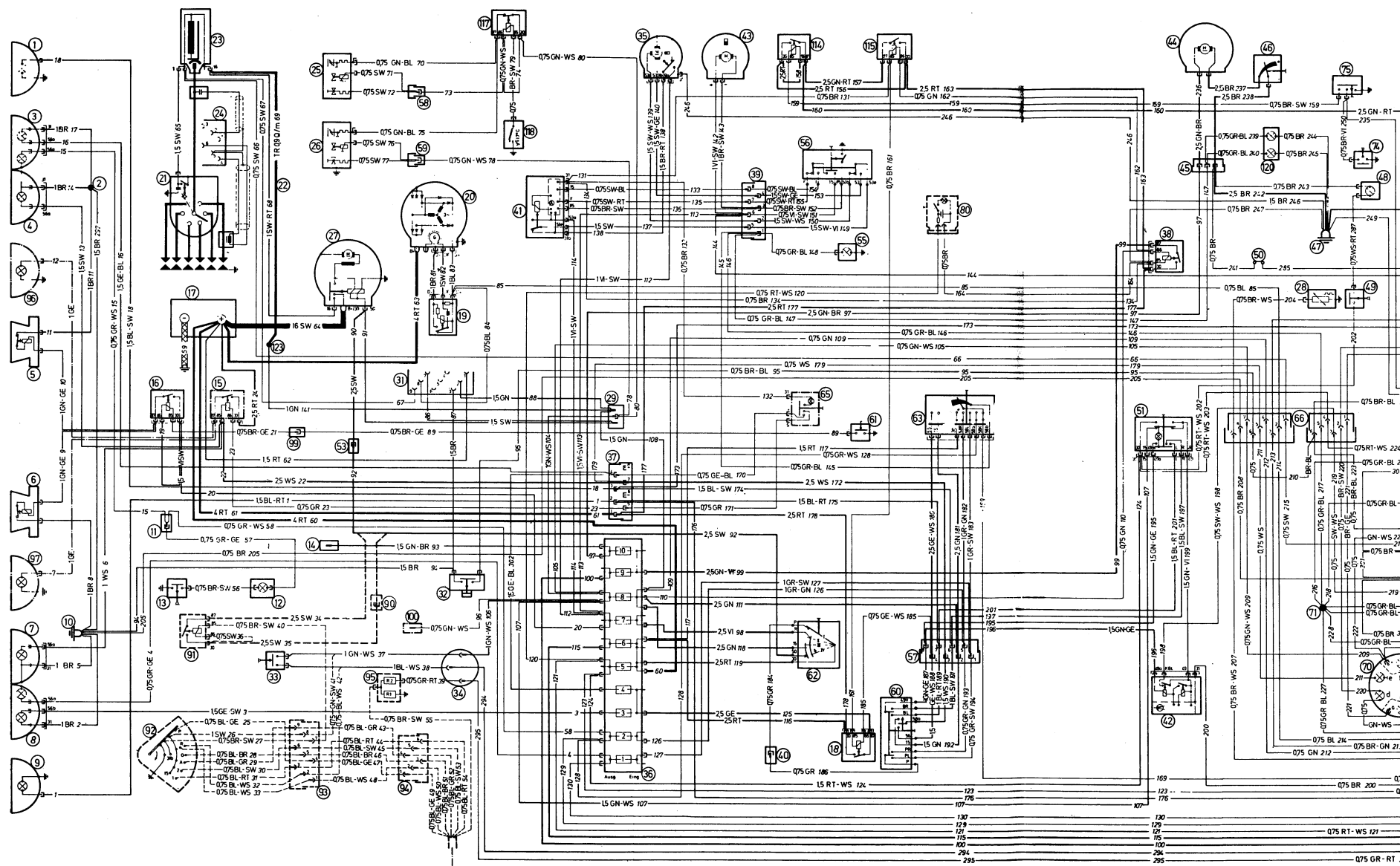


BMW 3.0 CSi, 3.0 Si

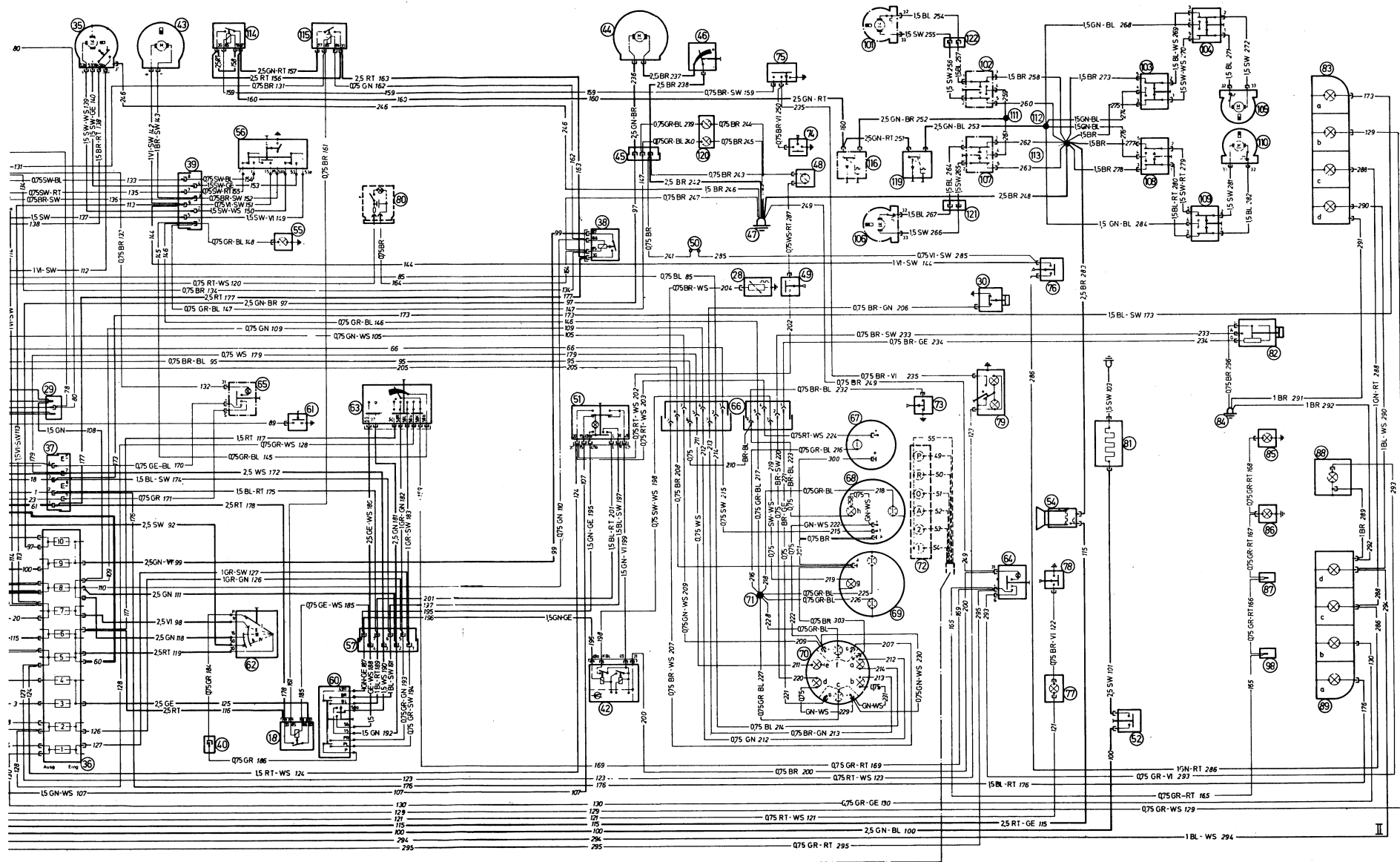
elektronische Benzineinspritzung - electronically controlled injection system



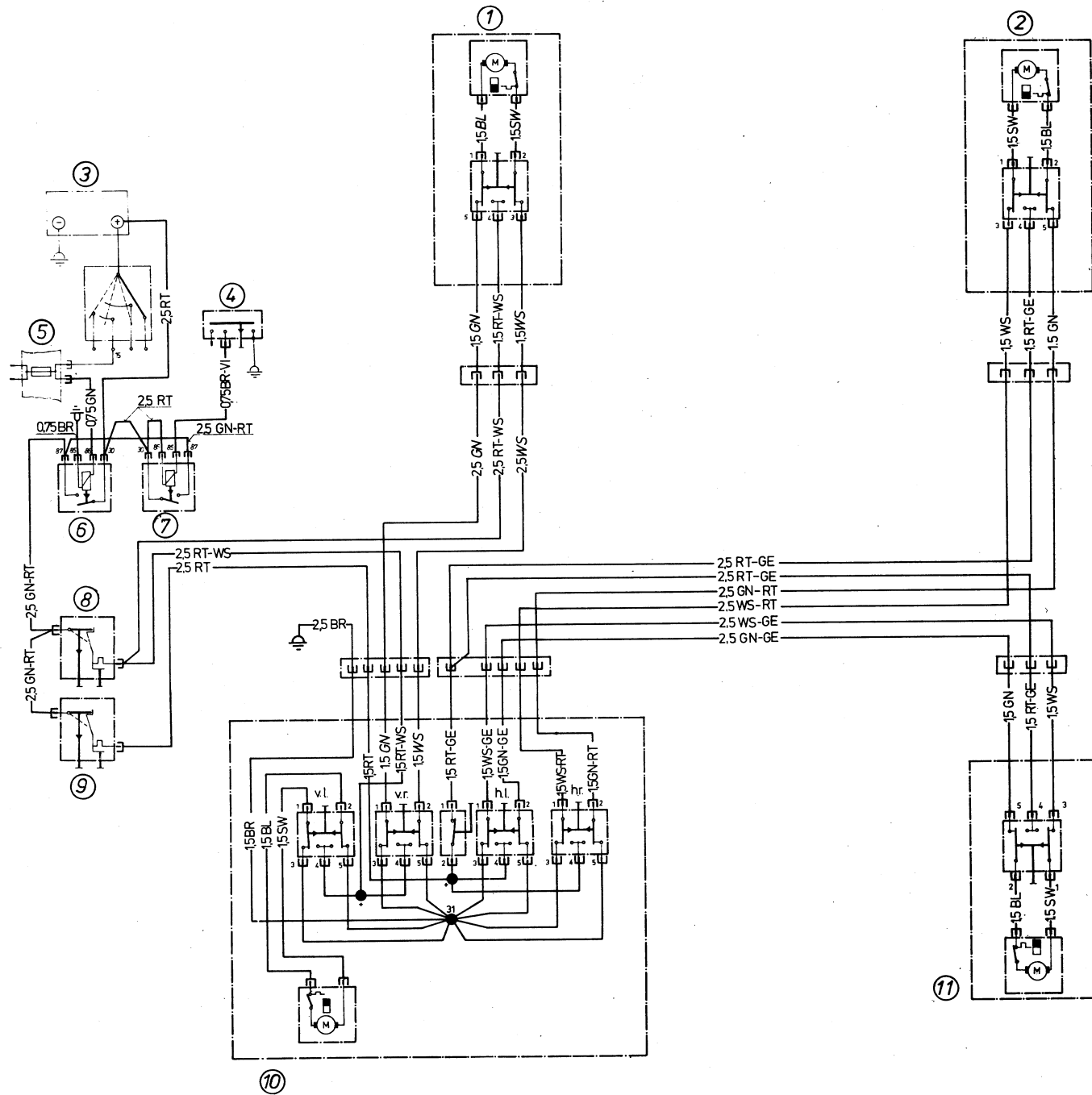
BMW 2.5 CS -3.0 CSi / A , 3.0 CSL (3.15 Ltr.)



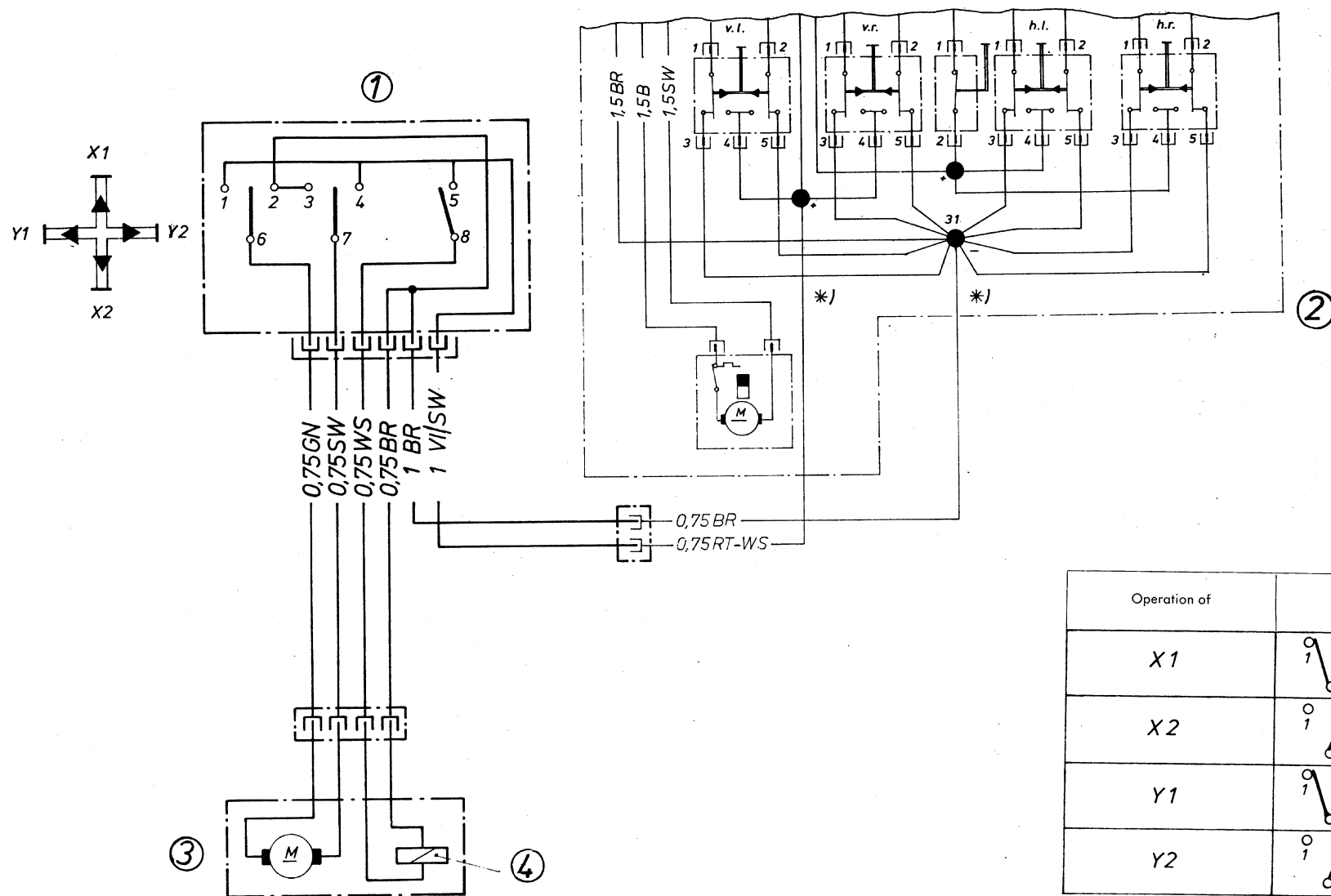
BMW 2.5 CS - 3.0 CSi / A, 3.0 CSL (3.15 Ltr)



Elektrische Fensterheber - electric window controls

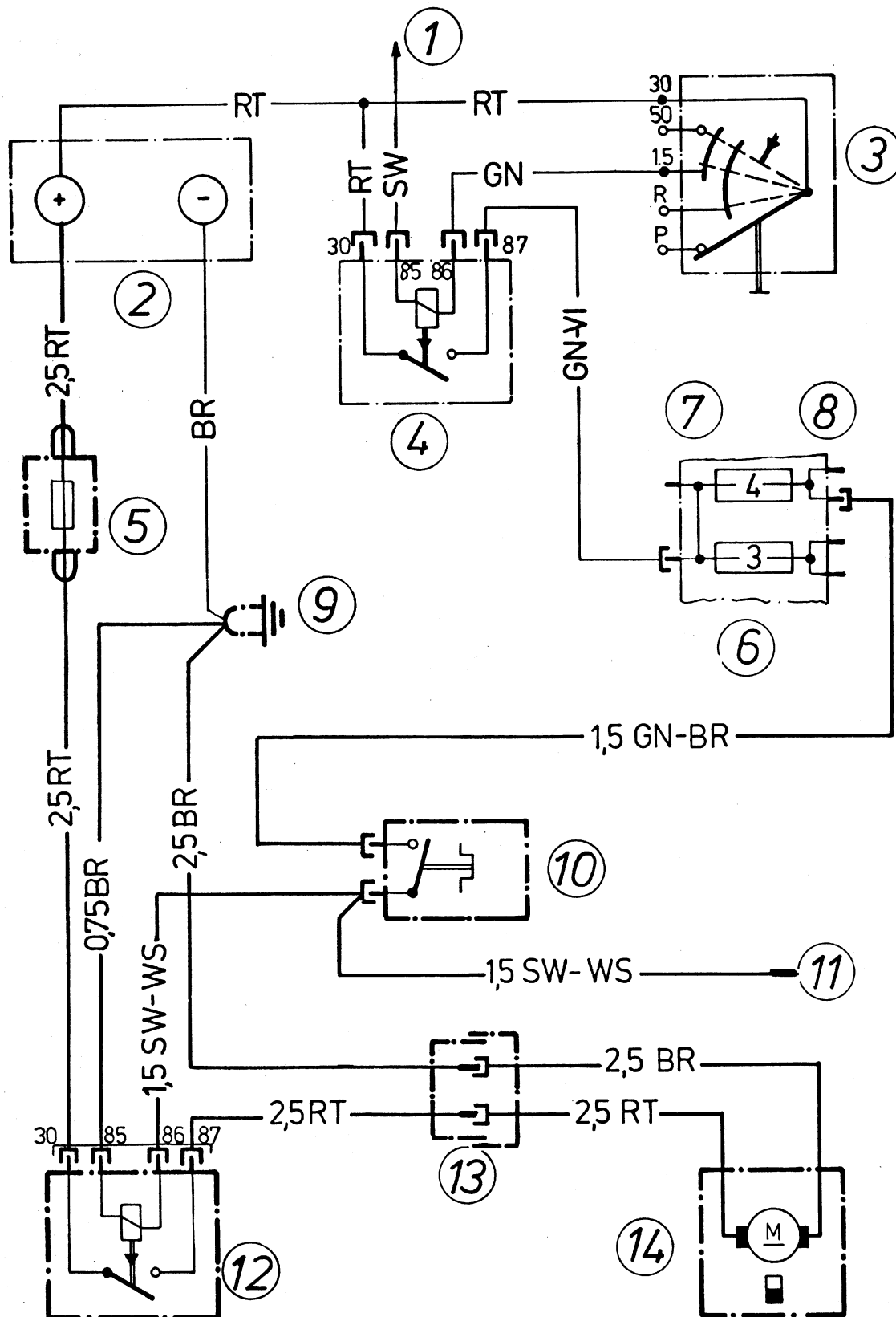


E3 / E9 - elektrisch verstellbare Aussenspiegel - electric controlled ext. rear view mirror



E3 / E9 Modelle - Automatic / Air Condition

Zusatzlüfter - Extra fan





Automatic